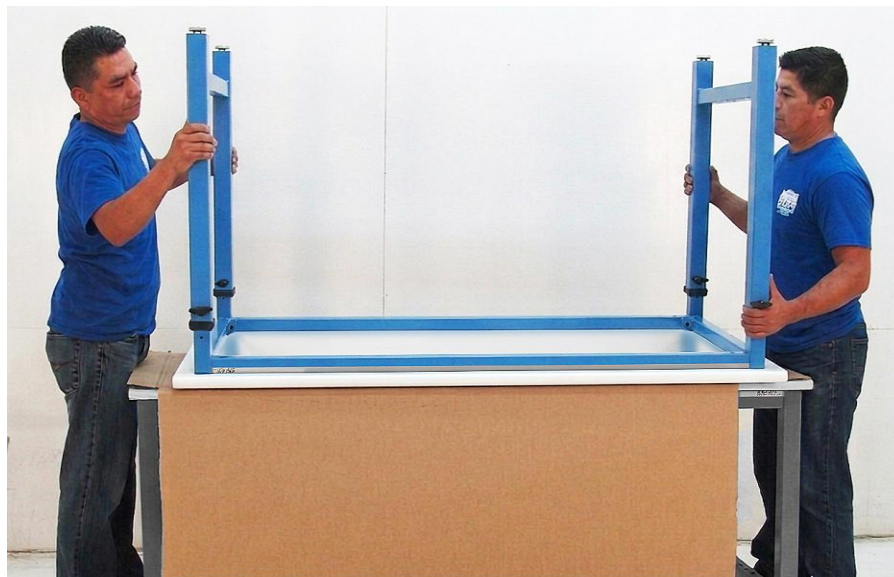


Cleveland Series Bench Assembly.

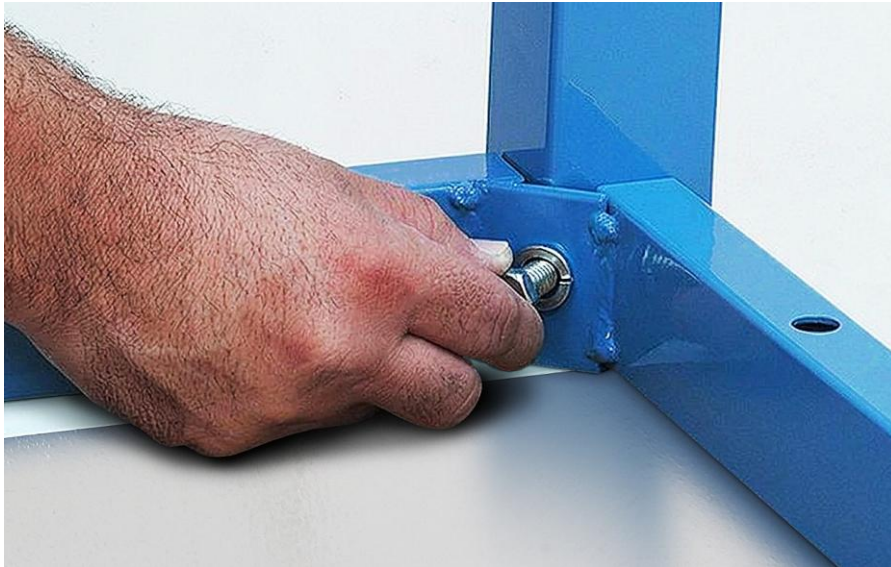
1. Place your new **Benchpro**TM workbench on top of a table with the cardboard seam facing up. Open the carton. don't remove the cardboard yet.



2. Position the legs. If you have a lot of benches to do, we recommend two man teams.



3. Insert a bolt with a lock washer into each leg.



4. Tighten until lock washer is flat. It doesn't have to be tighter than that.



5. If you ordered drawers or CPU holder, assemble them next.

6. Place the Modesty Panel on back of the legs. The screws are self-drilling and self-tapping. To install the screws, use a drill with a screwdriver bit. The screw will drill its hole and tap itself in with the rotation of the drill.



7. Turn it over. You're done!

